

DECORATIONS

Vol 105
RM 5.00
RM 13.50

DECORATIONS

BEAUTIFUL SPACES

WAYS TO WORK PRIMARY BRIGHTS AND CLEAN WHITES

VERTIGINOUS GARDENS FOR INSTANT INSPIRATION

SMART ESSENTIALS FOR ANY OUTDOOR SPACE



SPECIAL!

1 no



DownMagaz

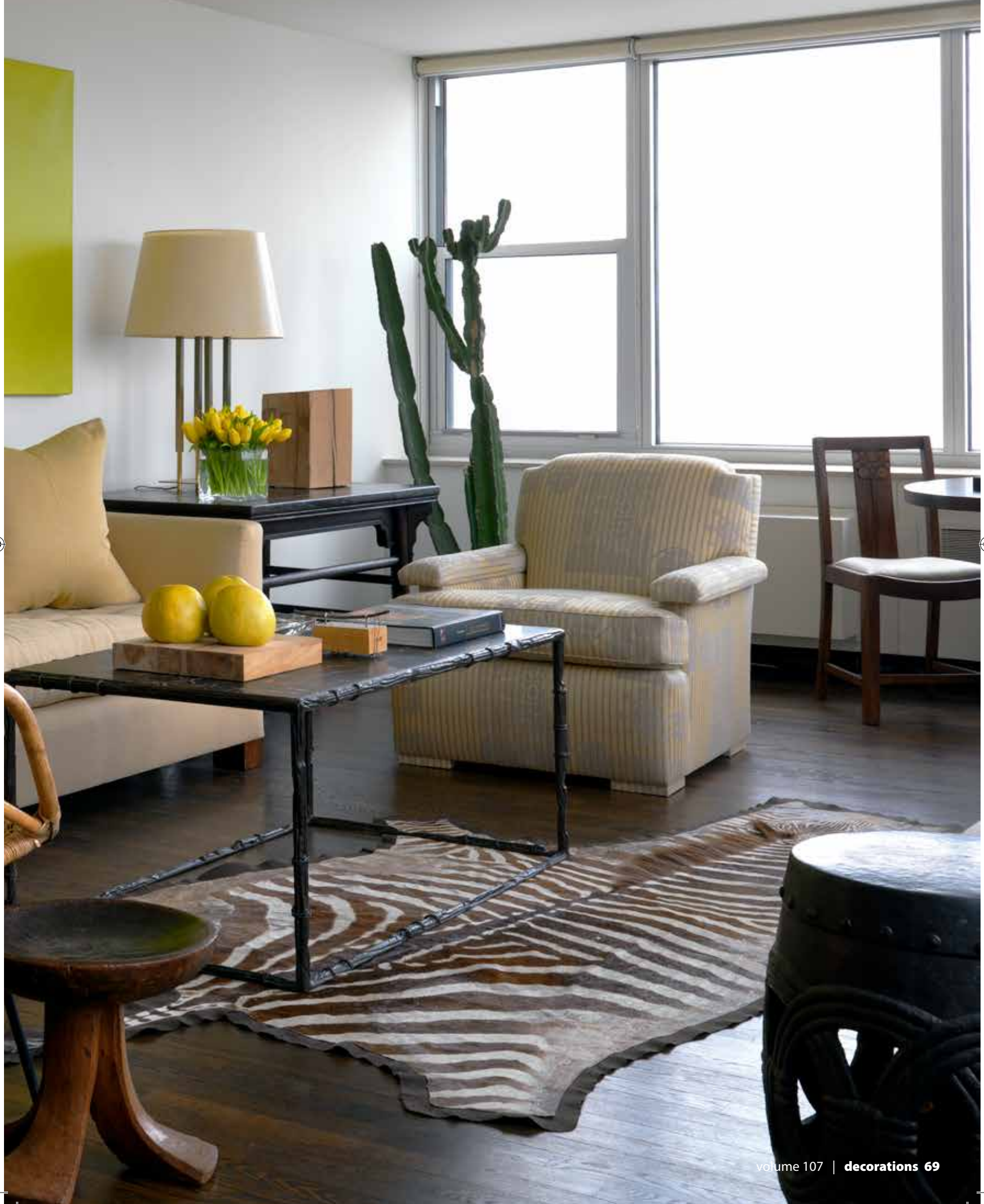
.CoM

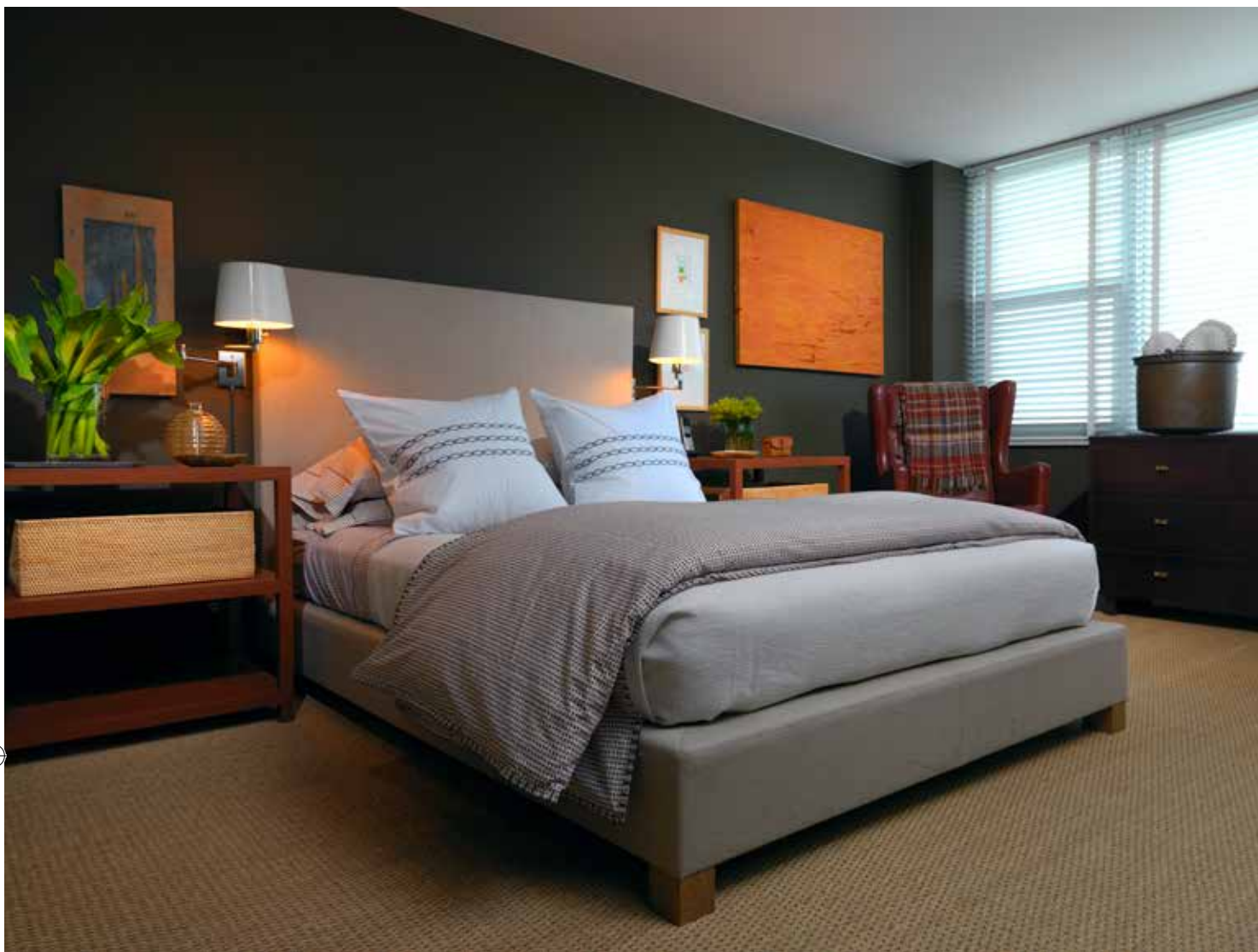
AL FRESCO STYLE MADE EASY TO BRING INSIDE

adept reinvention

A DISPLAY OF ELEMENTAL MASTERCLASS

↑ A splash of neon brightens the living space with the aid of the north-facing windows, while the zebra rug ties the furnishings together.





➤ **FROM LEFT** The master bedroom enjoys a contrast of deep grey walls alongside terra-cotta-coloured bedside tables, these raw luxuries complemented by the undyed rough linen bedcoverings. | The office and library space is also a conducive wind down spot for the designer, especially with the muted tones hoisting comfortable ware like the vintage Paul McCobb lounge chair. | Carved bamboo armchairs are celebrated additions to the dining room, triumphs of durable beauty.



PHOTOGRAPHY BY BOB COSCARELLI | TEXT BY KENNETH THEIXEIRA
Change is the only constant; this two-bedroom apartment is an exemplary application. After inhabiting the home for eight years, interior designer Stephan Jones decided it was time for an enormous reinvention.

Stephan was ready to borrow from work and travel exposure, wanting to recreate a home about the experiences he had. Spending years working for now-retired Chicago design legend Bruce Gregga, Stephan had numerous décor inspirations to draw from, along with an intense commitment to detail.

A self-proclaimed lover of natural sunlight, home is a two-bedroom, glass-walled and north-facing modernist high-rise apartment washed with consistent light - something Stephan cannot do without. Stephan shared that his primary goal for the redone home was to push

himself, making a space less structured, using more colour and employing decorative furniture freely.

We see the result reflecting Stephan's discipline- his love for simple lines and his ease with using natural materials and neutral colours are combined with his deep respect for mid-century modernity. These are supplemented by the apartment's playful, showy side, slices of indulgence implemented by the designer as well.

The attention arresting Andre Arbus Le Troyen settee in the living room was noted to be a game changer, its introduction leading to additional eclectic fittings amidst the surroundings, many of them viable conversation openers. Likewise, the dining room saw its original stolid white oak table newly accompanied by a pair of carved bamboo armchairs, with Stephan noting they lend a whimsical flavour.



➊ **FROM LEFT** Sculptural motifs rest handsomely atop the living room's vintage walnut credenza; an artist as well, Stephan created the framed oil-on-burlap collage himself. | A cozy nook used to situate a corner table, a perfect spot for midday respite | Stephan was inexplicably drawn to the horse sculpture by artist Jean Buckley, situating it atop his dining table.



Published in Vol 107
Sep / Oct 2015



Colour schemes used reflect the mix of confidence and reserve possessed by the designer. A prime example is the library, where walls are painted lead grey, lined with dark floating shelves. These serve as a backdrop for Stephan's appointed stars of the room- throw pillows covered in massively colourful paisley print across a chaise lounge. Similarly, the master bedroom shares the colour play, where two rectilinear, terra-cotta-coloured bedside tables contrast decidedly with the room's dark-brown walls.

Stephan was also satisfied with the home reflecting his mastery of textural interplay. Madagascar cloth walls

scale the entry and swathe into the dining space, his bed is covered in undyed rough linen, and one of the common area's highlights include an antique terra-cotta pot transformed into a table lamp.

Stephan greatly enjoyed bringing the natural touch into rooms, without them becoming overbearing. Arguably, the most natural experience is the light influx courtesy of the steady glow filtering through the north-facing windows; the designer's dear refurbished reinvention is constantly illuminated.

SAY YOU SAW IT IN DECORATIONS

Stephan Jones Interiors, www.stephanjones.com